

ARGE Conference 2023 Prague 14th - 15th September

Optional programme



Optional programme

Thursday, 14.9.2023

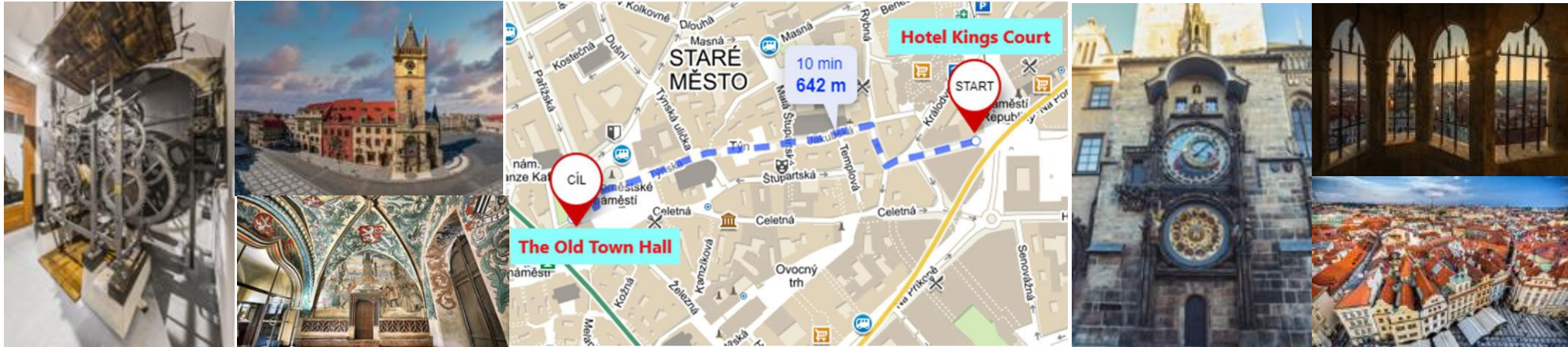
14:00 – 15:45

A short walk to the Old Town Square, a guided tour of the Old Town Hall with the Astronomical Clock and a view from the tower

(Fee: 13,90 €)

The Old Town Hall was established in 1338 as the seat of the Old Town administration. The oldest part of the complex consists of the southern wing a beautiful Gothic tower with a bay chapel and a unique astronomical clock – known as the Orloj – where, every hour between 9 am and 11 pm, the twelve apostles appear. The Gothic Revival eastern wing of the Town Hall was destroyed during the Prague Uprising on May 8, 1945 and was never rebuilt. The visitor route includes the chapel, historical halls, the underground areas and the tower.

Almost 70 metres high massive prismatic tower, dating from the 14th century, is the dominant feature of the Old Town Hall and indeed the entire square. The tower's viewing gallery offers beautiful views of the city; it is possible to see Týn Cathedral or Saint Nicolas' Church, while you can also admire Prague Castle in the distance or be astonished by the multitude of towers, spires and domes arrayed in Prague's diverse architecture.



Optional programme

Thursday, 14.9.2023

16:00 – 17:15

A tour of Prague in historic cars

Departure: at the corner of Pařížská street and Old Town Square, by the Cartier shop

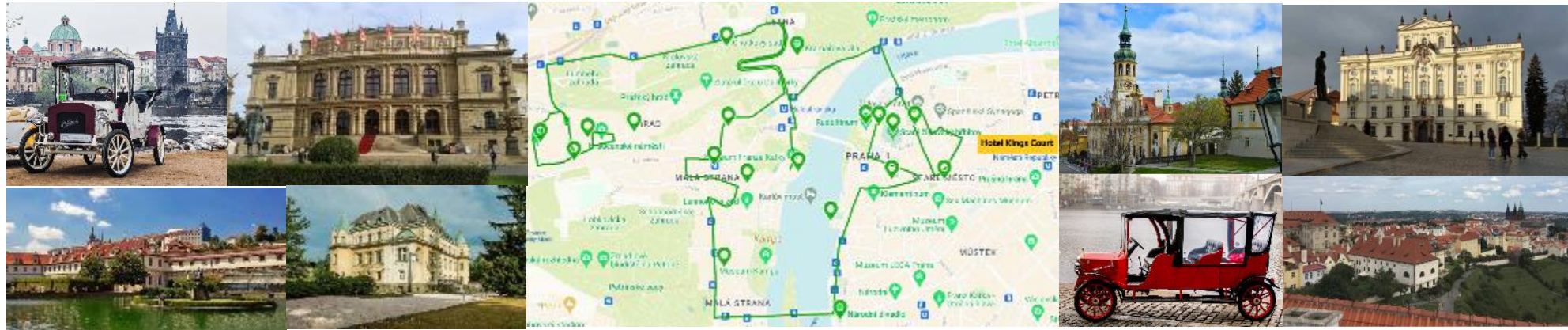
Arrival: nearby the hotel

(Fee: 27 €)



On this tour we will discover the most interesting sights of the Old Town and Lesser town, we will not miss any of the breathtaking Old Jewish Cemetery, magnificent Rudolfinum or the beautiful Wallenstein Palace. Route tour also includes the way to Prague Castle and its first courtyard, breathtaking views of the entire city, famous baroque church Loreta...

From the professionally trained drivers we will learn not only historical facts but also interesting things associated with this sights. During the journey we pass a couple of stops, where we can fully enjoy the atmosphere of the place.



Optional programme

Friday, 15.9.2023

9:20 – 10:30

A guided tour of the Municipal House – a few steps from our hotel

(Fee: 10,60 €)

The Municipal House is a civic building that houses Smetana Hall, a celebrated concert venue, in Prague.

The Royal Court palace used to be located on the site of the Municipal House. From 1383 until 1485 the King of Bohemia lived in the property. After 1485, it was abandoned. It was demolished in the early 20th century. Construction of the current building started in 1905. It opened in 1912. The building is of the Art Nouveau architecture style. The building exterior has allegorical art and stucco. Many of the rooms in the building are closed to the public and open only for guided tours.



Optional programme Friday, 15.9.2023

10:30 – 11:15

Current Exhibit_iMucha in the Municipal House – Collection of posters by Ivan Lendl

(Fee: 12,30 €)

This remarkable exhibition offers a completely new view, corresponding to the technologies of the 21st century, of the world's most comprehensive collection of the Czech Art Nouveau master, gathered by the former number one in tennis Ivan Lendl. Thanks to the fact, that Mucha's posters were put in motion digitally, and it was done in a highly professional way, all visitors will have the chance to meet with animated models, be surrounded by scenes from the Slav Epic and even have Alfons Mucha himself speaking to them. The outstanding concept of the exhibition moves the Art Nouveau period more than hundred years forward, whereas visitors can travel hundred years back in time. The exhibition presents almost 240 of the most eye-catching artefacts. The entire exhibition is thus a unique set of impressions of stunning monumentality, digital effects, easy comprehension and appeal to the general public, as well as the most interesting information and moments of Mucha's era.



Optional programme

Friday, 15.9.2023

14:00 – 17:00

A guided tour of Prague Castle

(Fee: 31,40 €)

Prague Castle is a castle complex in Prague, built in the 9th century. It is the official office of the President of the Czech Republic. The castle was a seat of power for kings of Bohemia, Holy Roman emperors and presidents of Czechoslovakia. According to the Guinness Book of Records, Prague Castle is the largest ancient castle in the world, occupying an area of almost 70.000 square metres.

In 1918, the castle became the seat of the president of the new Czechoslovak Republic, Tomas Garrigue Masaryk. The New Royal Palace and the gardens were renovated by Slovenian architect Josip Plecnik. In this period the St. Vitus Cathedral was built since the 14th century and finished on September 28, 1929.

Transport to Prague Castle is provided by bus with a capacity of 58 seats

Departure/Arrival point: Hotel Kings Court

(In case of more participants it is possible to use a taxi / microbus in addition to the bus)



Optional programme

Friday, 15.9.2023

19:00 – 22:30

Sightseeing cruise on the Vltava River

(Fee: 110 €)

The boat CALYPSO will set sail on a grand tour through the historic centre of Prague and pass under 10 Prague bridges. After exploring the area around the Charles Bridge, we will sail upstream to the edge of the city, past the oldest part of the city and then back downstream. Along the way we will see many of Prague's illuminated landmarks, including the castle.

During the cruise, the captain can give a lively commentary about the sights on the Vltava banks, the history of the Vltava Cruise and interesting events on the river.

There will be a buffet and musical accompaniment provided during the cruise.

From our hotel we will walk to the boat (and then from the boat) - about 650 m.



MAJESTY LOUNGE

There is a majesty lounge on the ground floor of Kings Court hotel where we can have a drink and chat after dinner.

Enjoy your stay!

